

# A Conversation With OSHA

---

**Sidney Haines**  
**Cincinnati Area Director**

# Why Work Safely?

---

# OSHA's Continuing Mission

- OSHA and its state partners, coupled with efforts of employers, safety & health professionals, unions and advocates, have helped **dramatically reduce** workplace injuries and illnesses.
- Worker fatalities in America are **down**—on average, from 38 workers a day in 1970 to **15** a day in **2019**.
- Worker injuries and illnesses are **down**—from 10.9 incidents per 100 workers in 1972 to **2.8** per 100 in **2019**.

# OSHA's Balanced Approach

- Enforcement
- Outreach
- Compliance Assistance



# Secretary of Labor



Marty Walsh

# Principle Deputy Assistant Secretary of Labor - OSHA



James (Jim) Frederick

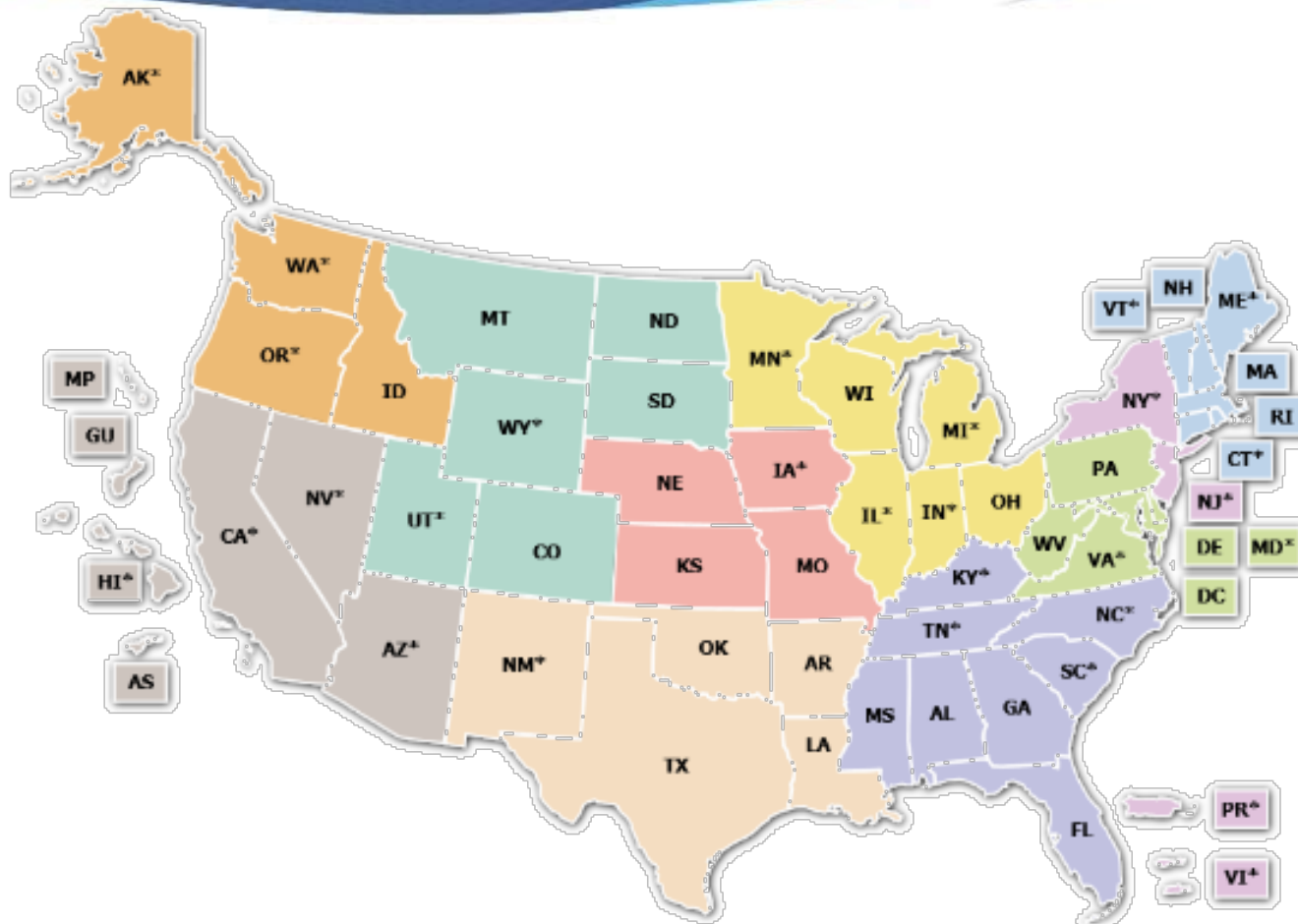
# Assistant Secretary of Labor – OSHA



Doug Parker  
Chief of Cal/OSHA



# How OSHA is Organized



- Region 1: Boston
- Region 2: New York
- Region 3: Philadelphia
- Region 4: Atlanta
- Region 5: Chicago
- Region 6: Dallas
- Region 7: Kansas City
- Region 8: Denver
- Region 9: San Francisco
- Region 10: Seattle



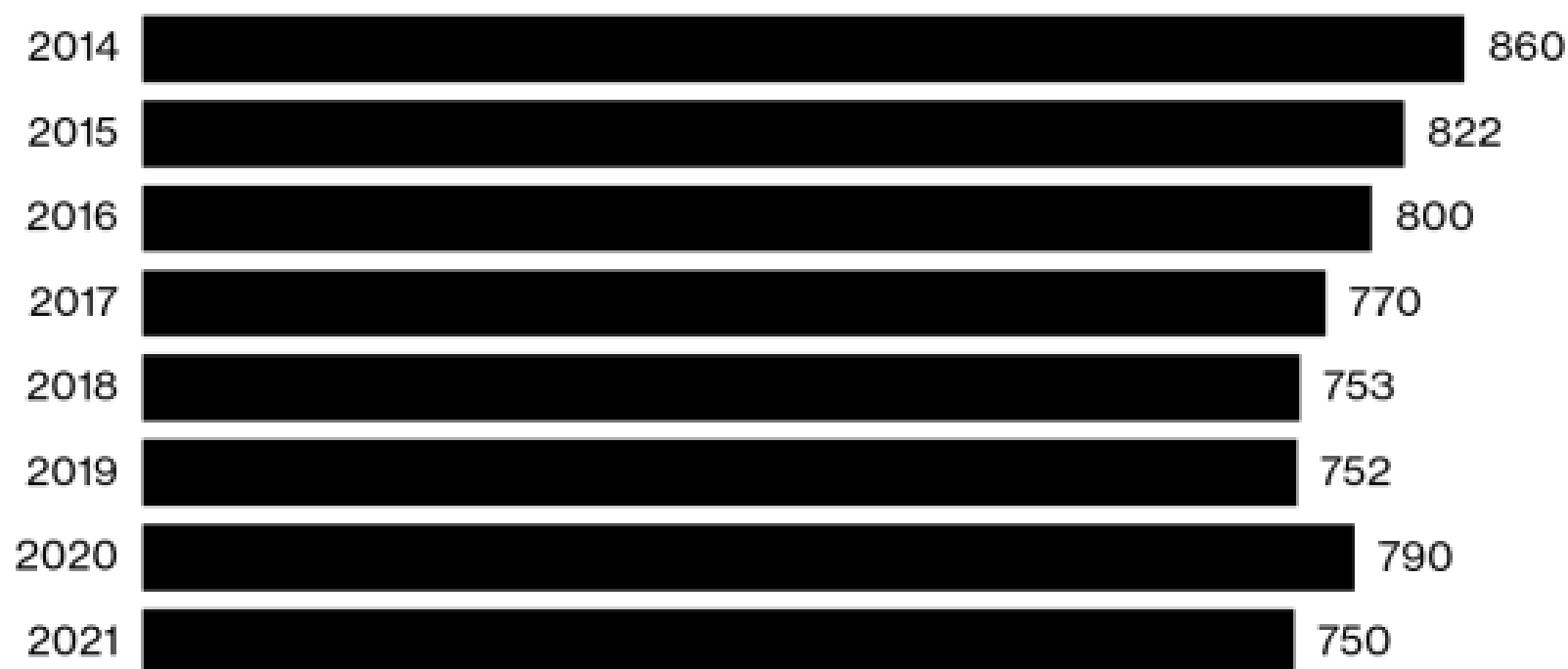
# Federal OSHA

- OSHA Staff: ~~2,305~~ 1,600?
- Workers: 130 million
- Worksites: 8 million
- Regional Offices: 10
- Local Area Offices: 90

## Number of OSHA Inspectors FY 2014-2021

Fewer inspectors for 2021 continues trend

■ Inspectors



Source: OSHA

Bloomberg Law

# Federal OSHA Ohio Offices

- OSHA Inspectors: 58 ~~58~~ 55
- Workers: 5.0 million
- Worksites: 287,865
- Local Area Offices: 4
  - Toledo
  - Columbus
  - Cleveland
  - Cincinnati

**OSHA is Hiring!**  
**Apply Here**

# Ohio OSHA Offices

**Toledo Area  
Office**  
**(419) 259 - 7542**

**Cincinnati Area  
Office**  
**(513) 841- 4132**



**Cleveland Area  
Office**  
**(216) 447-4194**

**Columbus Area  
Office**  
**(614) 469 - 5582**

## REGION V FATALITY STATISTICS

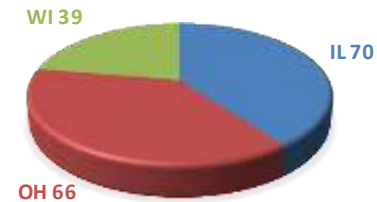
Fatalities under OSHA's jurisdiction in Region V

Calendar Year 2021	Calendar Year 2020
End Date: December 31st	End Date: December 31st
175	257

Immigrant Language Fatalities CY 2021	
Immigrant Language Fatality Inspections	9
Hispanic	8

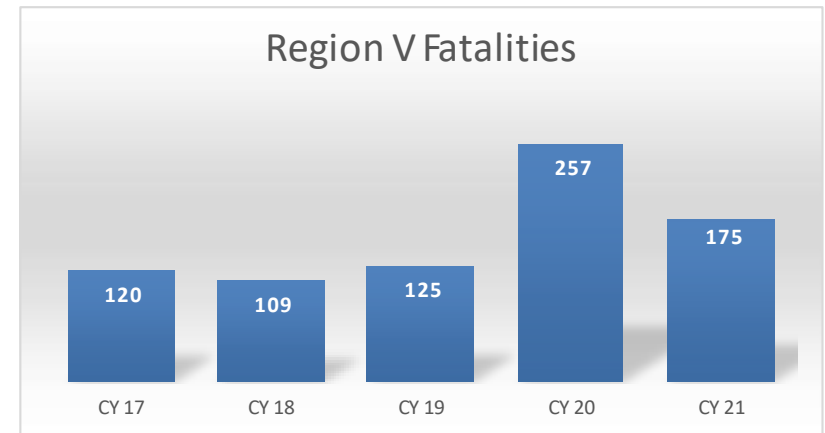


NUMBER OF FATALITIES INVESTIGATED PER STATE FOR CY 2021



FATALITIES BY EVENT AND INDUSTRY SECTOR			
	CY 2021		
	Construction NAICS 23*	Manufacturing NAICS 31* - 33*	Other
Caught	3	15	10
Electrocution	2	1	4
Exposure	0	10	64
Fall	17	6	12
Fire & Explosion	1	1	0
Other / Pending	1	1	6
Struck	4	3	14
Trench Cave-In*	0	0	0
COVID**	0	8	61
Total	28	37	110

\* Included in Caught \*\* Included in Exposure

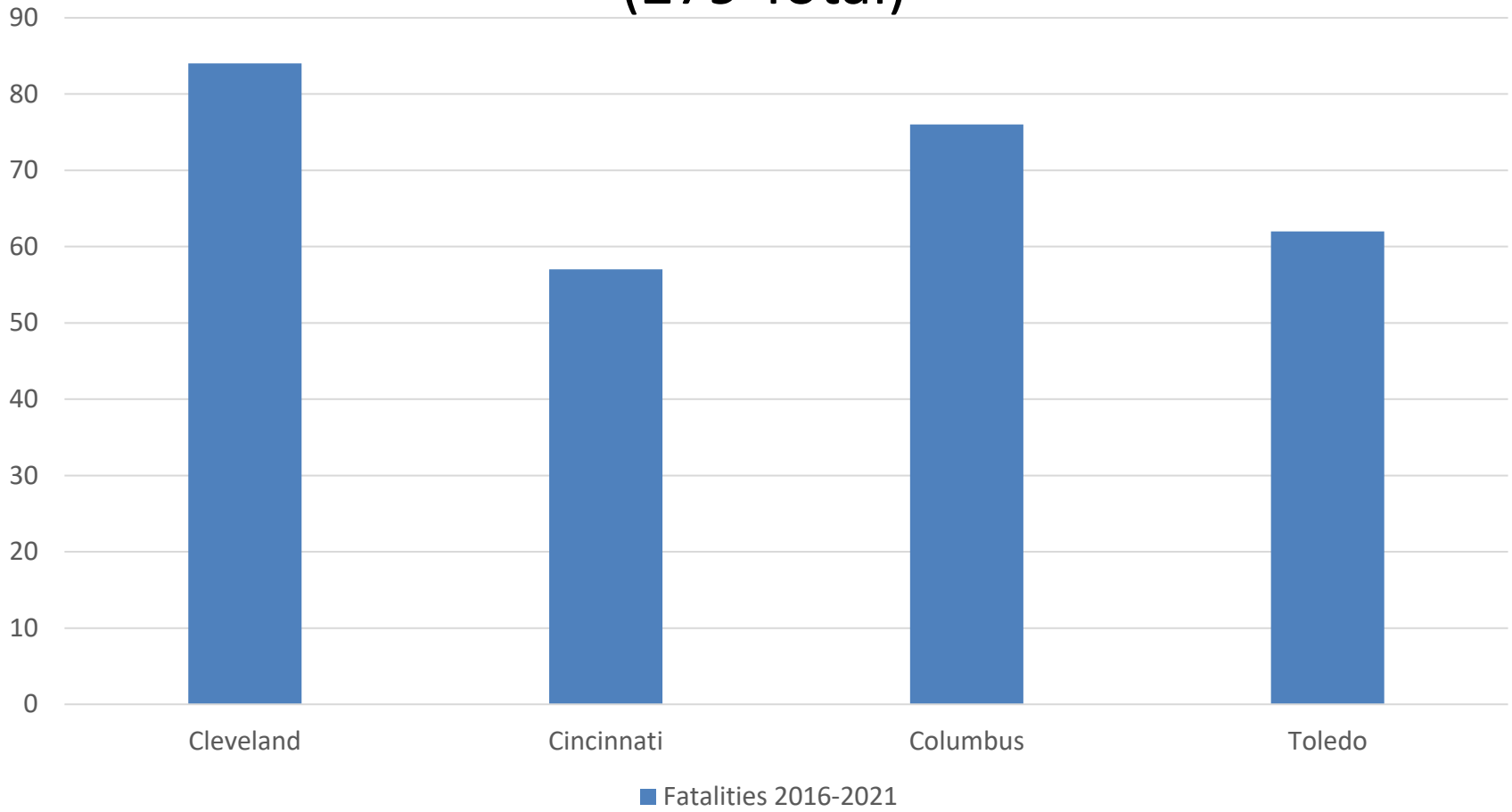


Produced by the Administrative Programs Unit on 1/3/22. **NOTE: Data subject to change upon completion of investigations.**

# Ohio Fatalities Inspected

## 2016-2021

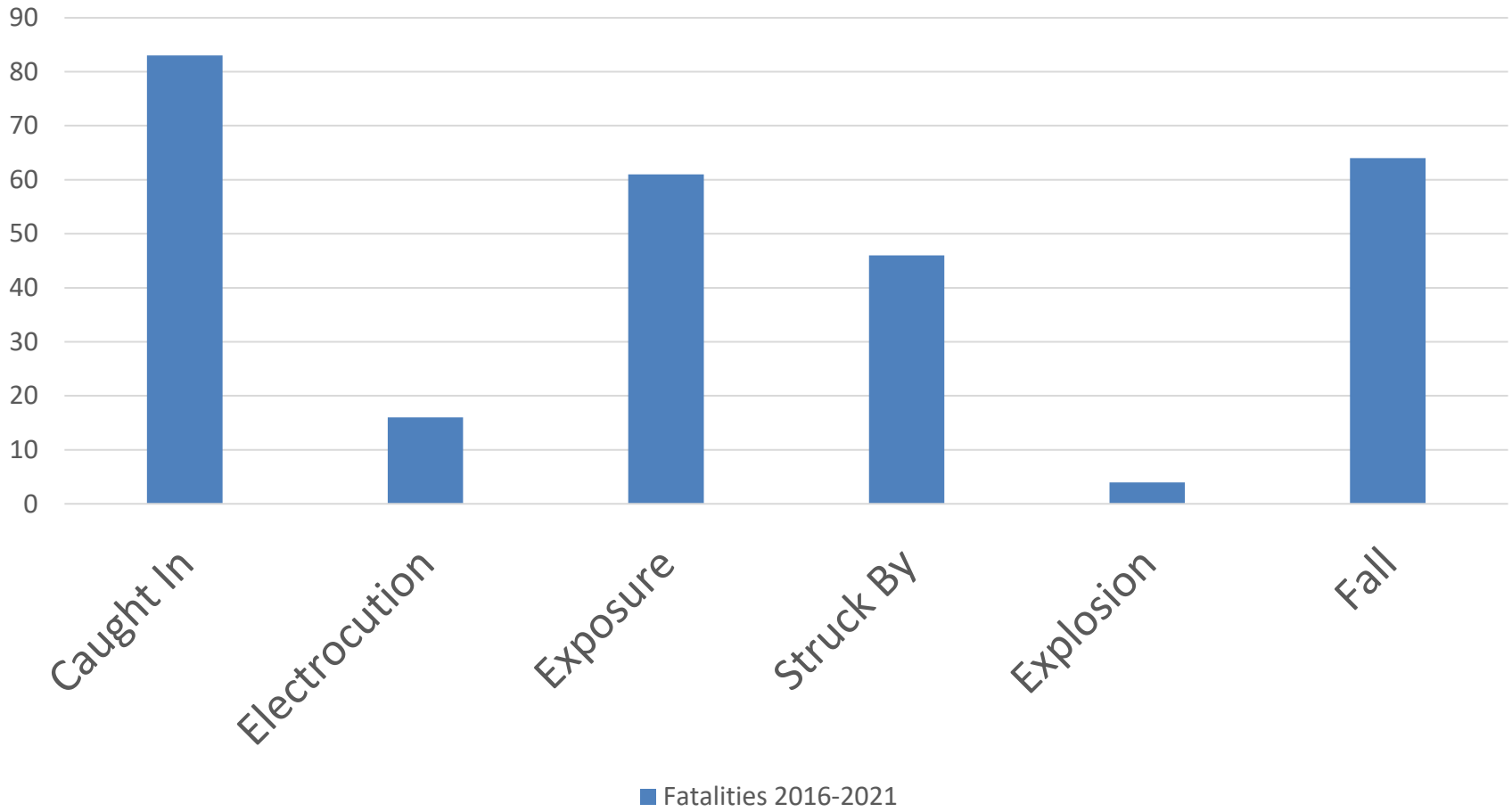
(279 Total)





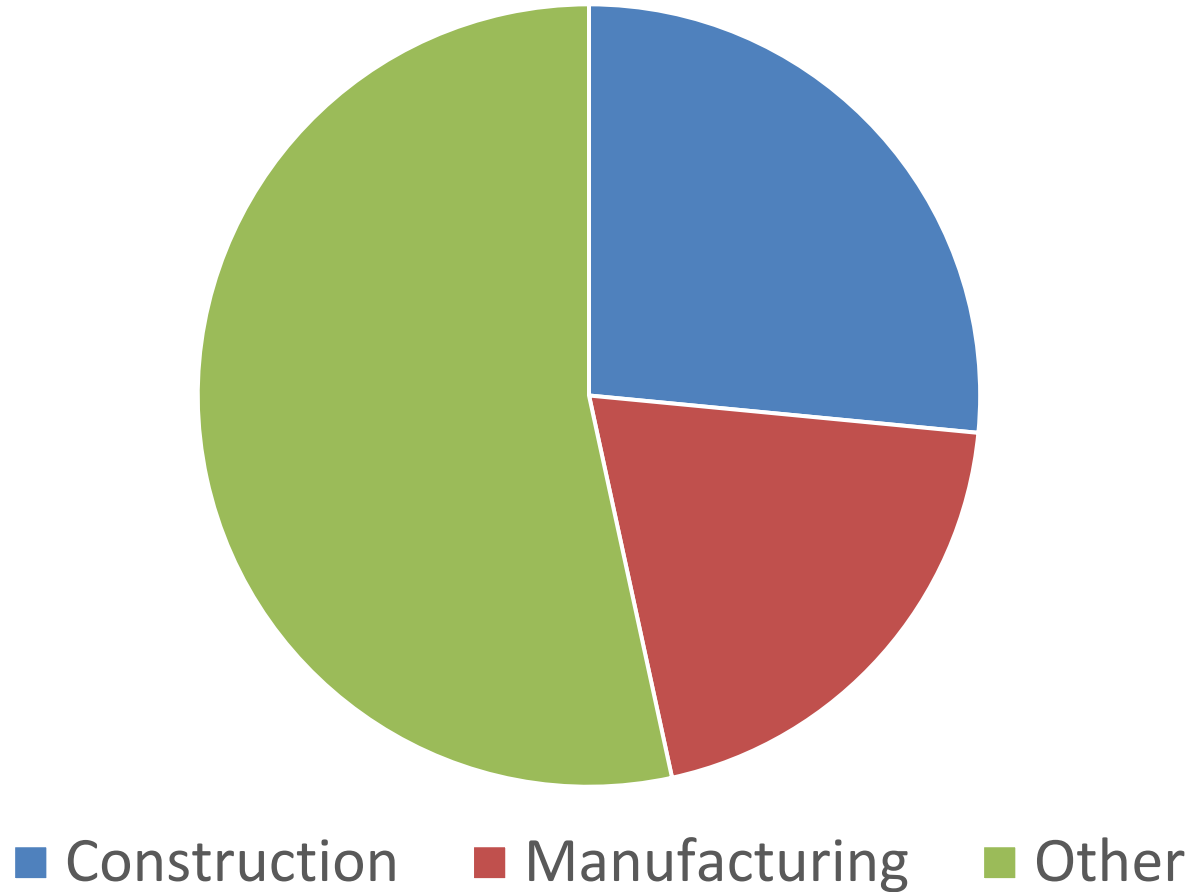
# Fatality Causes

## 2016-2021

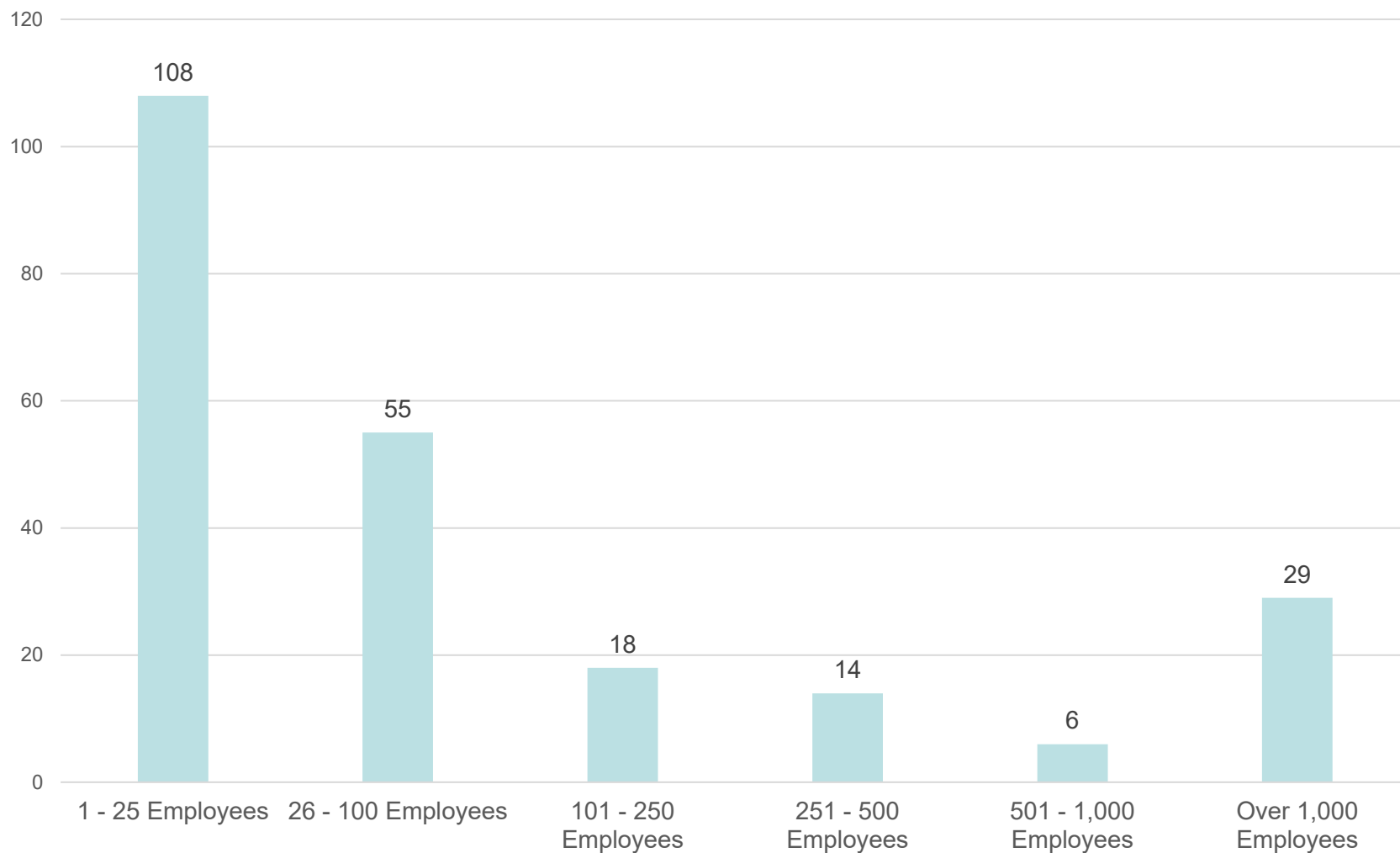


# Ohio Fatalities by Industry

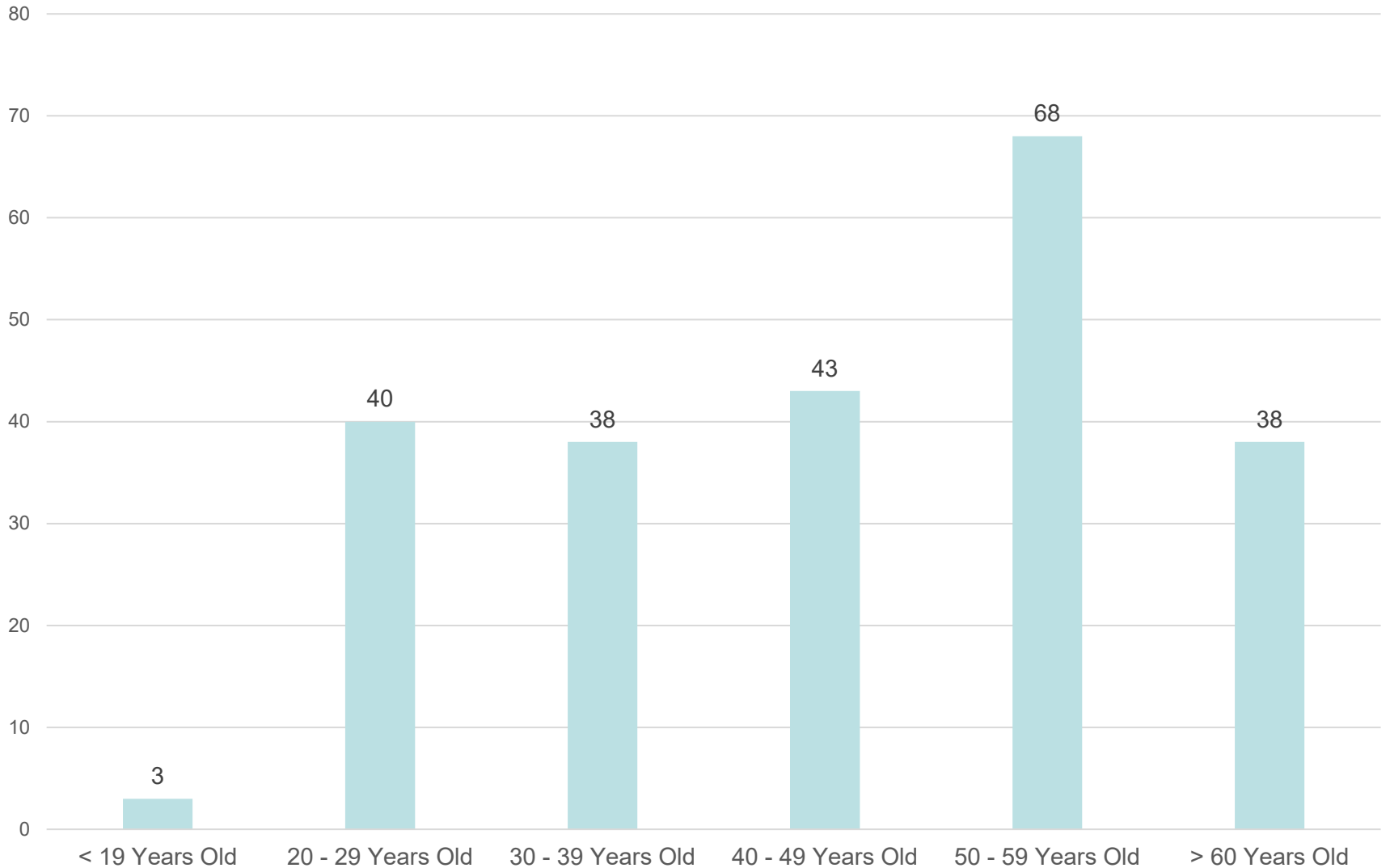
## 2016-2021



# Region V Fatalities by Establishment Size - Ohio



# Region V Fatalities by Age - Ohio



# JURISDICTIONAL FATALITY INSPECTIONS

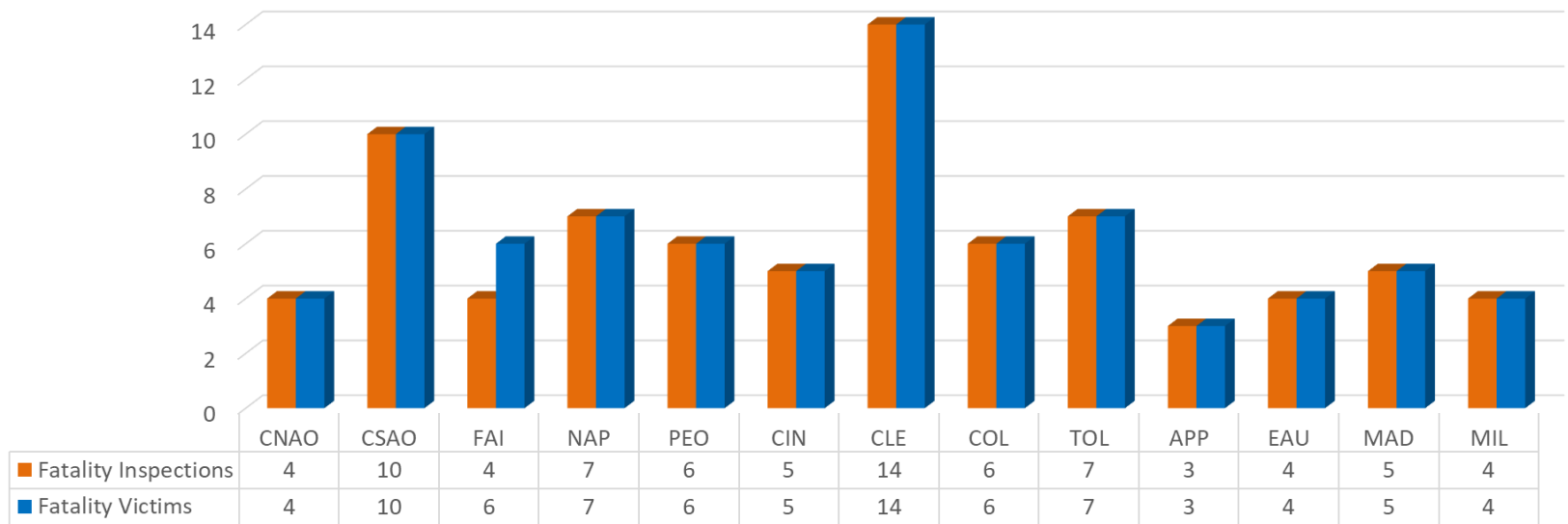
---

FY 22, Week 23 (10-1-21 to 3-13-22)

# 79 JURISDICTIONAL FATALITY INSPECTIONS & 81 VICTIMS

---

OSHA Jurisdictional Fatality Inspections & Victims



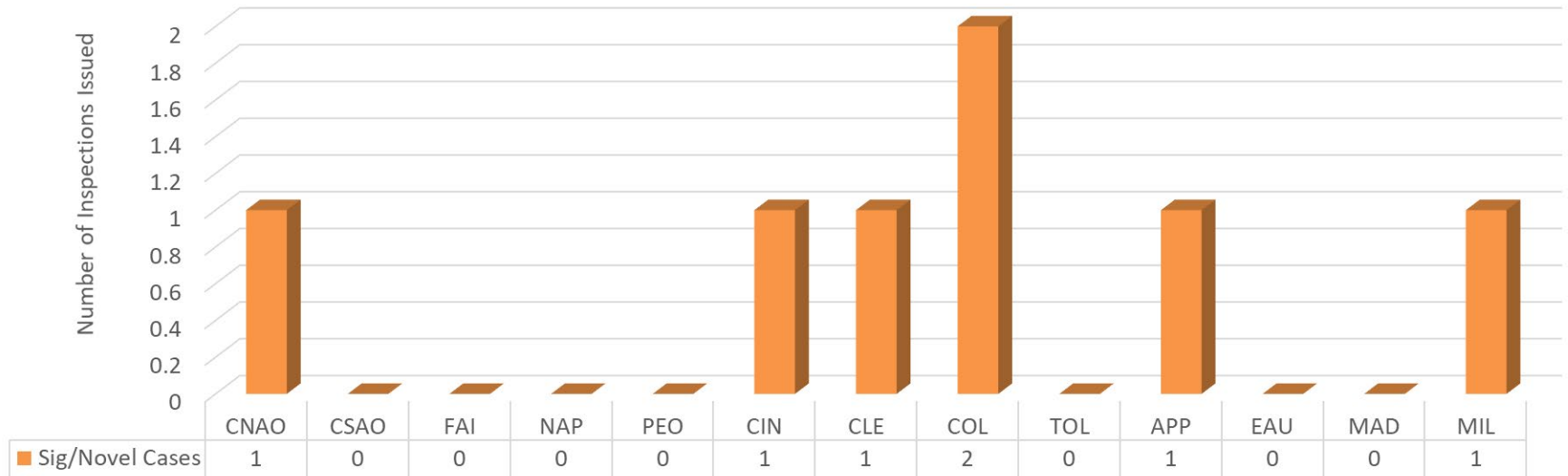
# SIGNIFICANT AND NOVEL CASES

---

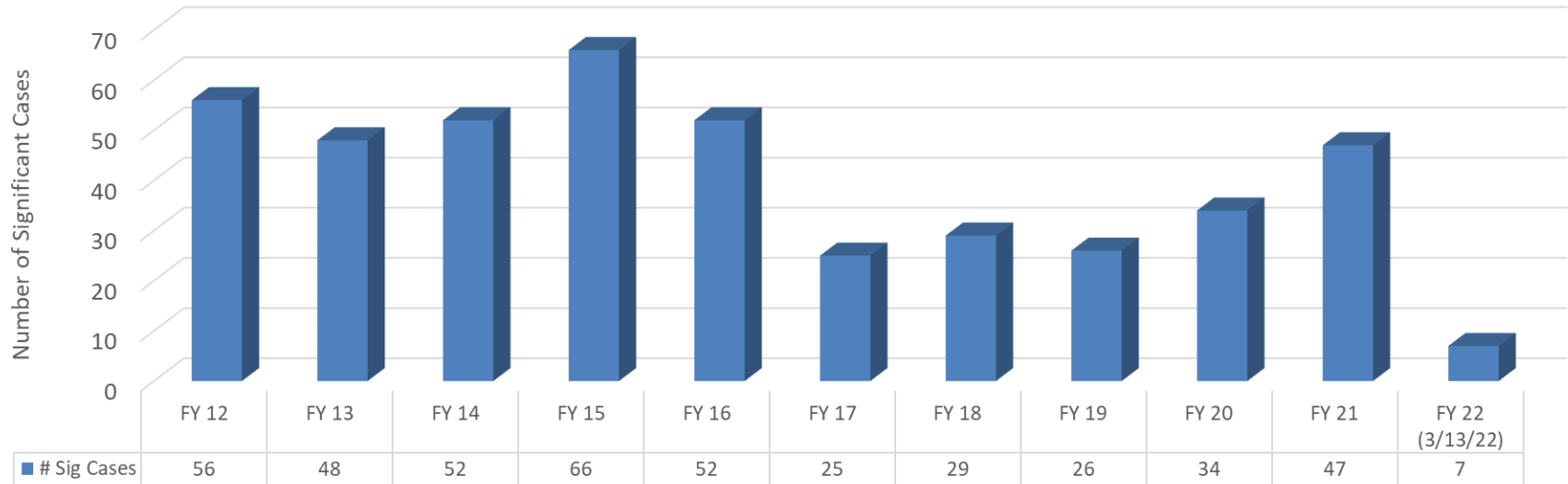
FY 22, Week 23 (10-1-21 to 3-13-22)



## 7 Sig-Novel Cases Issued in FY 22: 5 Due to Penalty & 2 Novel (COVID-19)



## Region 5: 442 Sig Cases Issued between FY 12 to FY 22 (3/13/22)



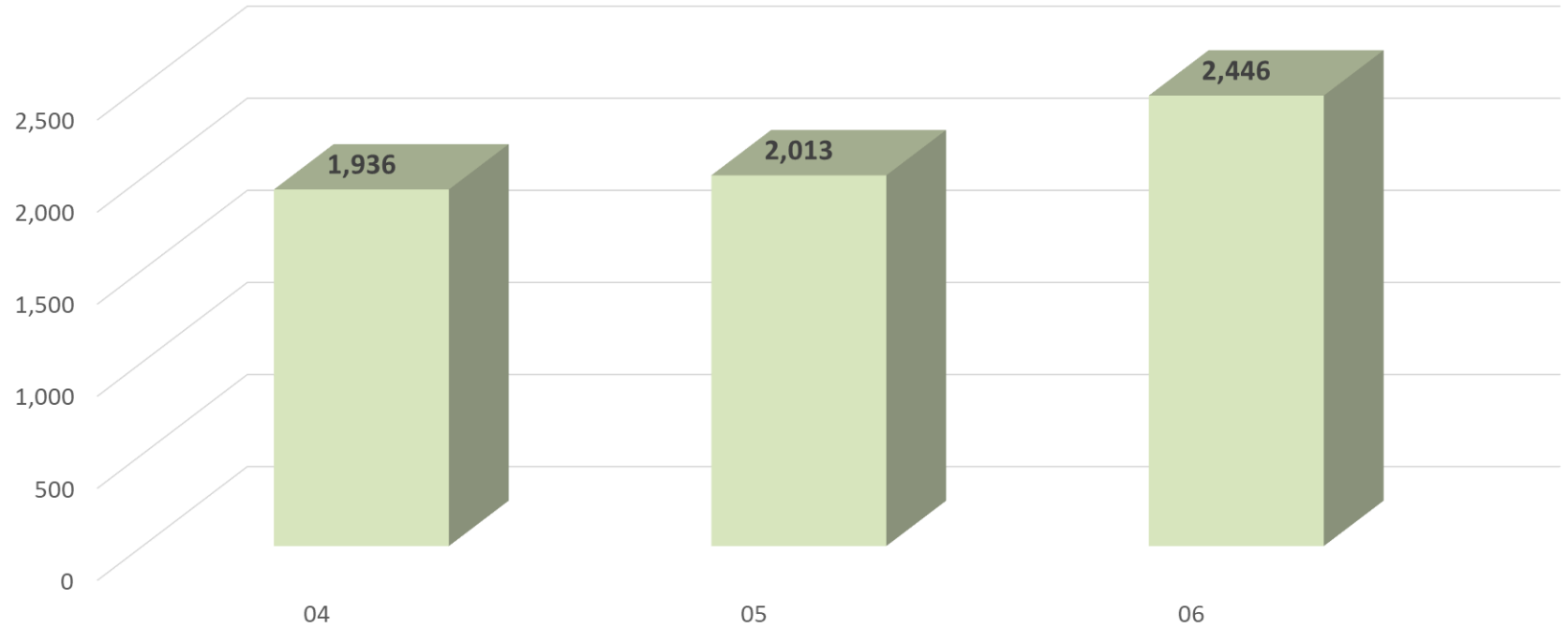
# INSPECTION PROGRESS & METRIC HIGHLIGHTS

---

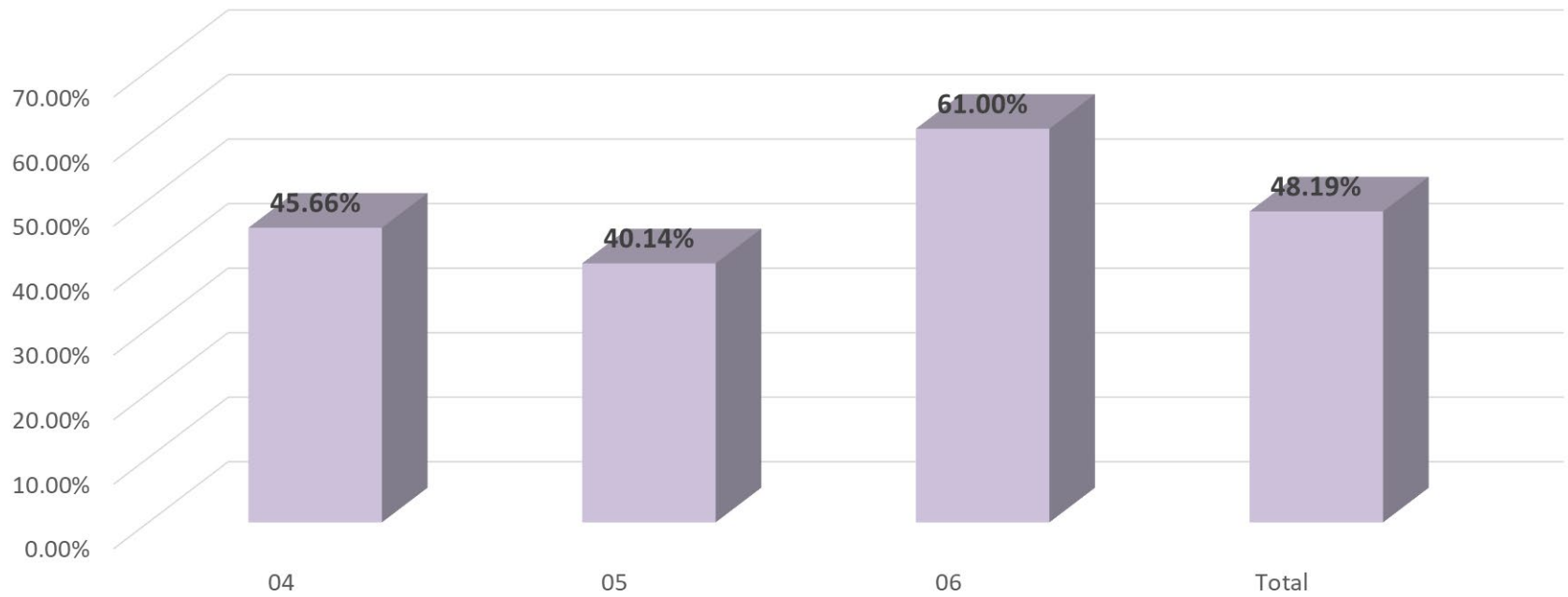
FY 22, Week 23 (10-1-21 to 3-13-22)



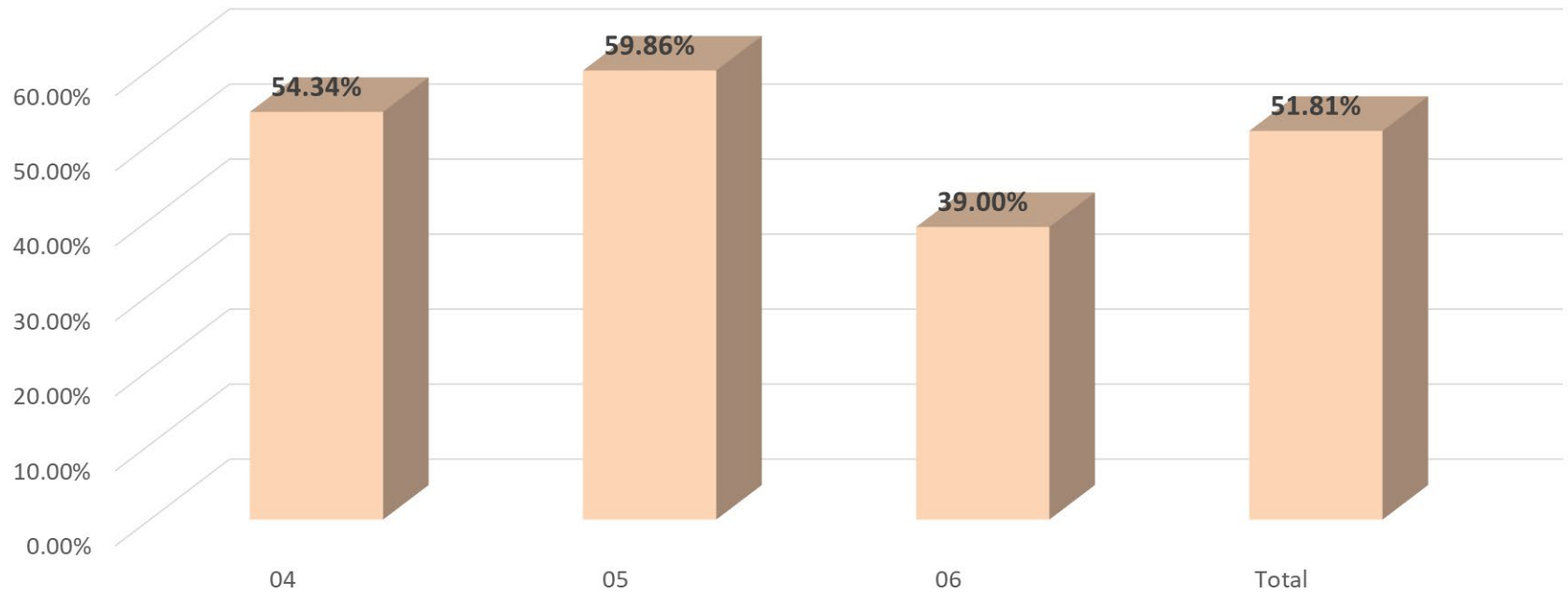
## Region 4, 5, & 6 Inspection Comparision



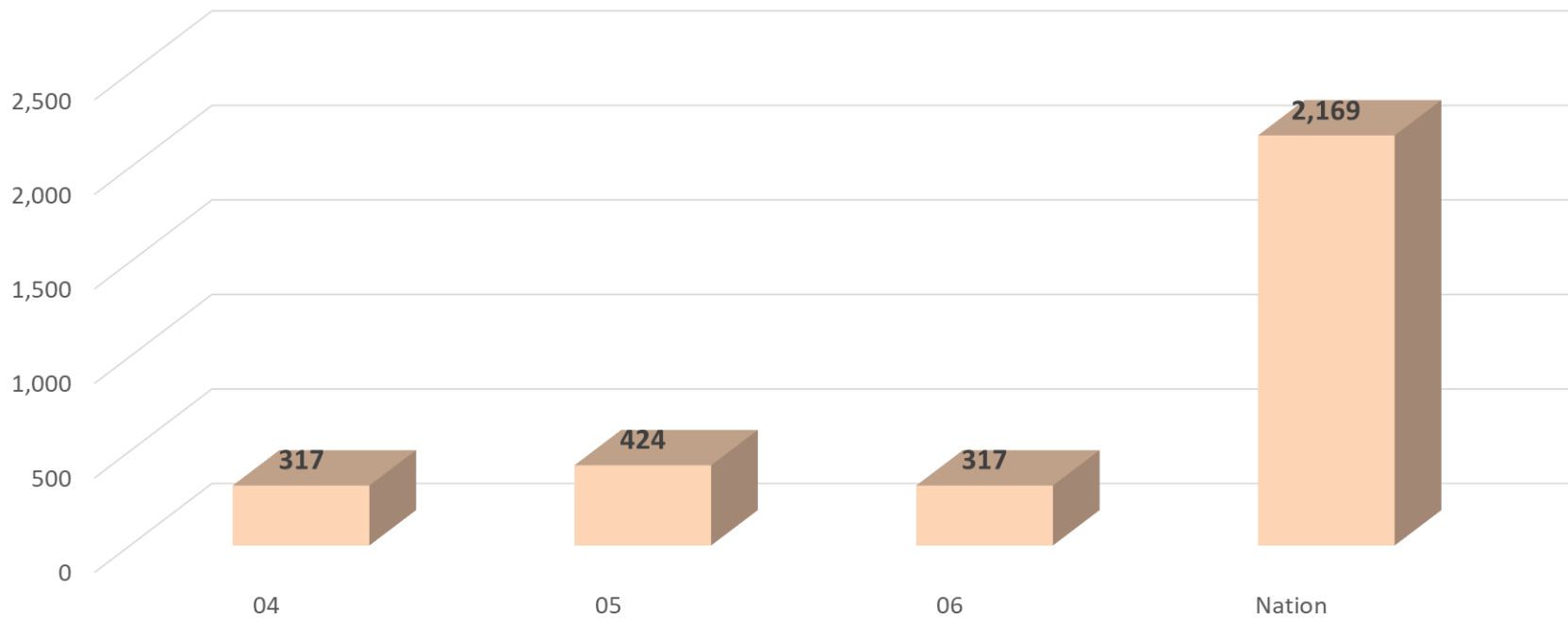
## % Construction Inspections



## % General Industry Inspections

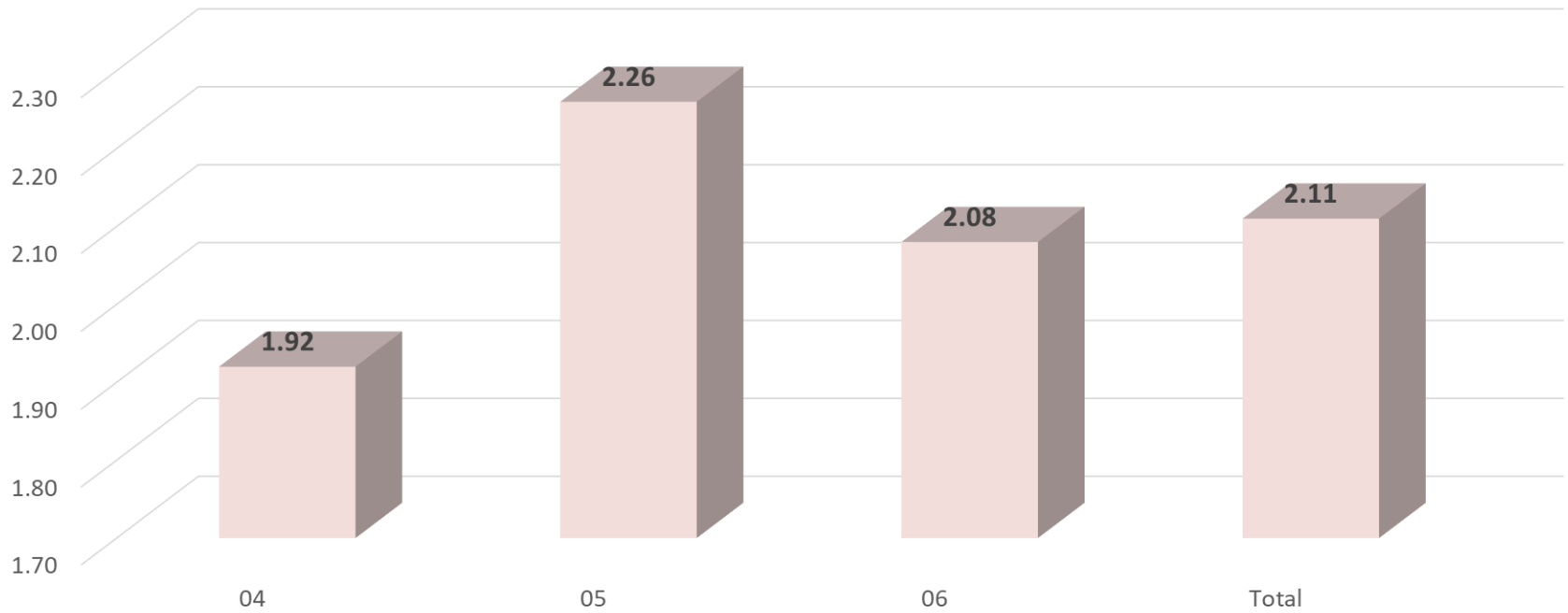


## Health Inspections

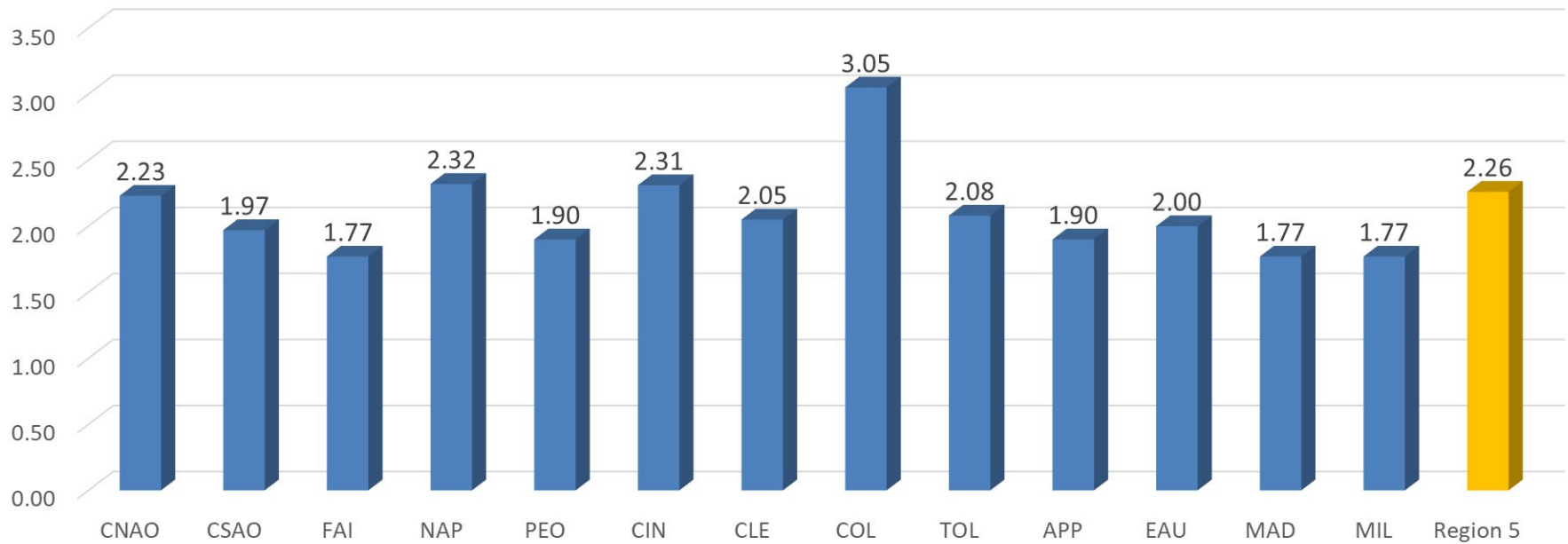




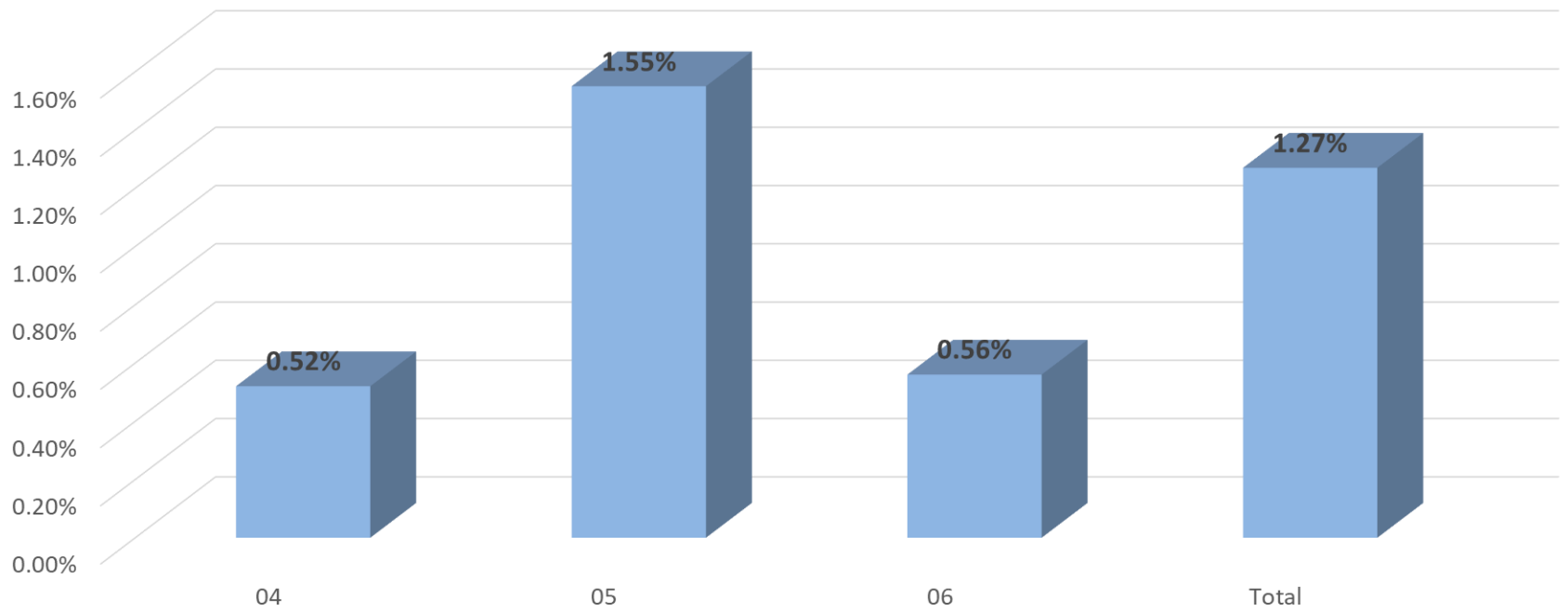
## Violations per Health & Safety Inspections



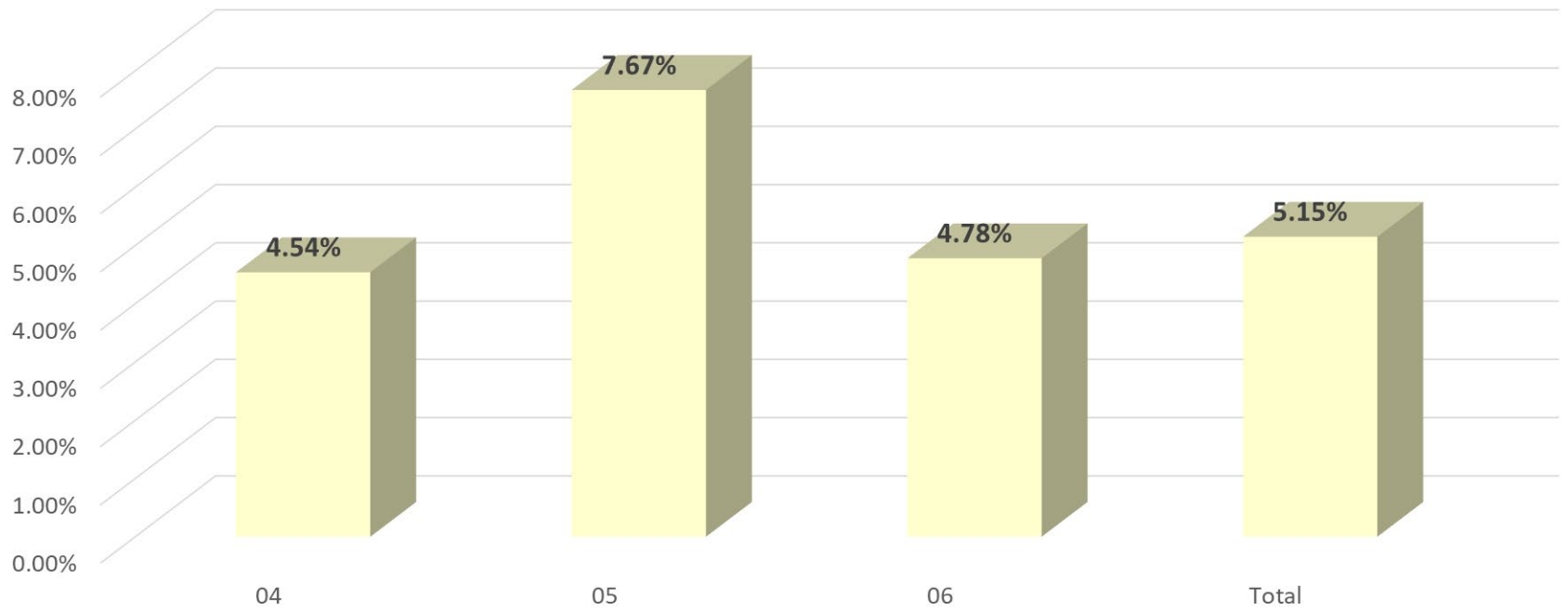
## Violations per Health and Safety Inspections



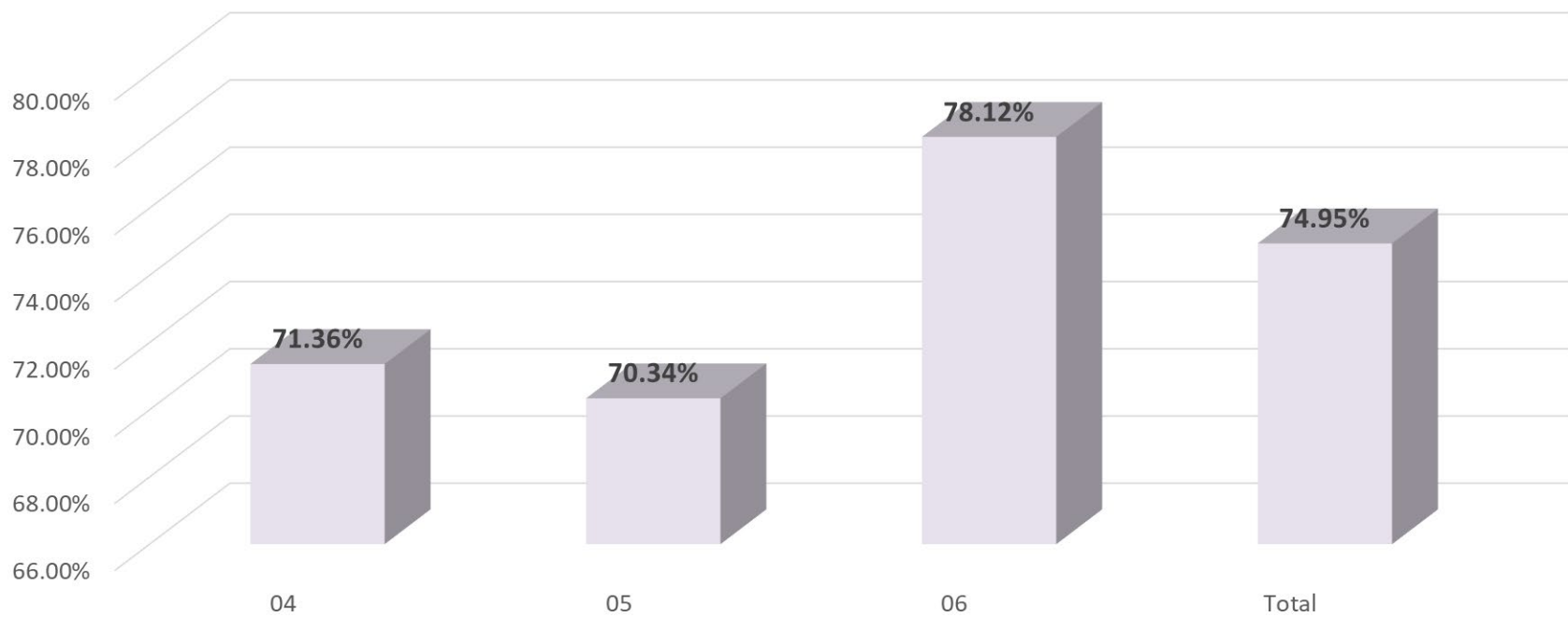
% Vio cited as Willful



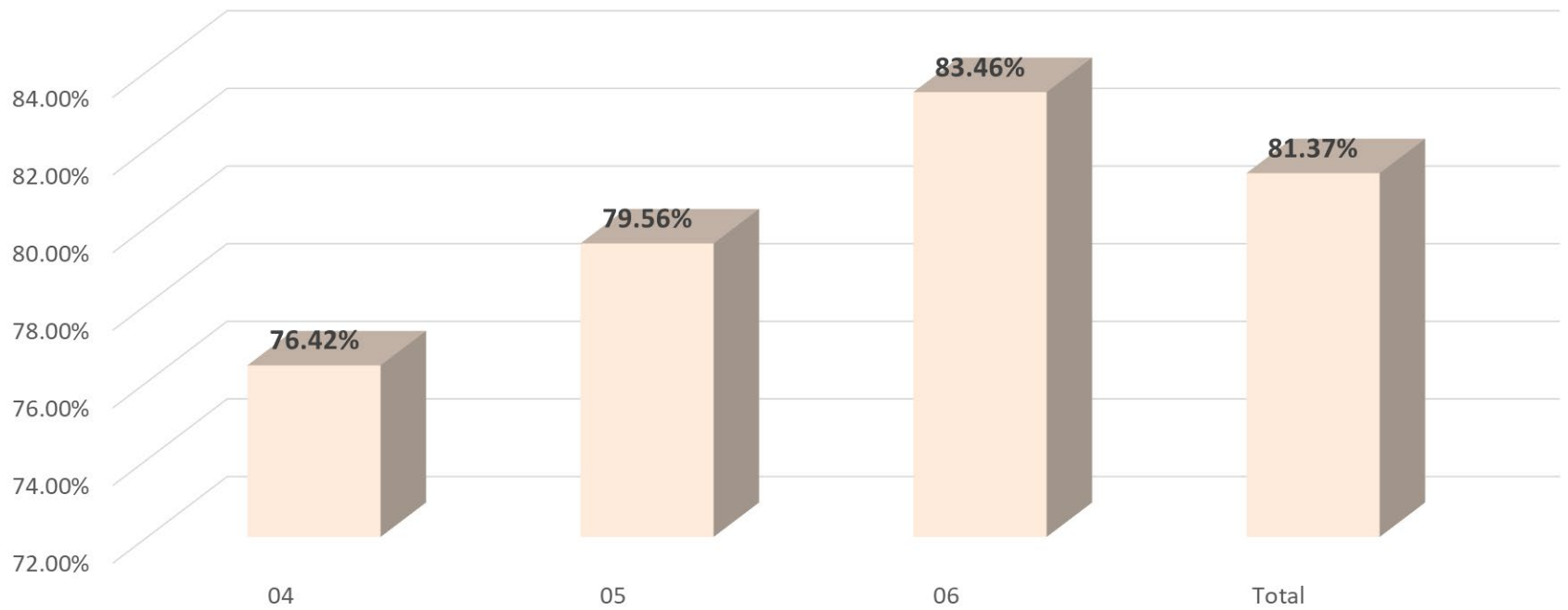
% Vio cited as Repeat



## % Vio cited as Serious



% Vio cited as SWRU



# Top 10 Violations: FY 2021

## Most frequently cited OSHA standards during FY 2021 inspections:\*

1. Fall Protection – General Requirements (1926.501)
2. Respiratory Protection (1910.134)
3. Ladders (1926.1053)
4. Scaffolding (1926.451)
5. Hazard Communication (1910.1200)
6. Lockout/Tagout (1910.147)
7. Fall Protection – Training Requirements (1926.503)
8. Eye and Face Protection (1926.102)
9. Powered Industrial Trucks (1910.178)
10. Machine Guarding (1910.212)

\*Based on preliminary data. OSHA does not finalize this list until April following the previous fiscal year.



# OSHA Penalty Levels: 2022

Type of Violation	New Maximum
<ul style="list-style-type: none"><li>• Serious and</li><li>• Other-Than-Serious</li><li>• Posting Requirements</li></ul>	<b>\$14,502</b> <del>\$13,653</del> per violation
Willful or Repeated	<b>\$145,027</b> <del>\$136,532</del> per violation
Failure to Abate	<b>\$14,502</b> <del>\$13,653</del> per day beyond the abatement date

# Ohio COVID Inspections FY-2021

- COVID Complaints
  - 411 total Complaints in Ohio
- COVID Inspections
  - 108 total Inspections in Ohio (1,859 in US)
  - 52 COVID NEP inspections in Ohio
- COVID Fatalities
  - 25 in Ohio

# COVID-19-Related Reports to OSHA

## March 2020 through August 2021

	March- May 2020	June- August 2020	September- November 2020	December 2020-February 2021	March- May 2021 <sup>a</sup>	June- August 2021 <sup>a</sup>	Total <sup>a</sup>
--	--------------------	-------------------------	--------------------------------	-----------------------------------	---------------------------------	--------------------------------------	--------------------

### Reports to OSHA

Complaints	4,843	3,757	2,579	2,708	1,213	750	<b>15,850</b>
------------	-------	-------	-------	-------	-------	-----	---------------

Referrals	148	134	77	348	59	37	<b>803</b>
-----------	-----	-----	----	-----	----	----	------------

Employer reports of severe injury or illness <sup>b</sup>	507	387	222	273	66	223	<b>1,678</b>
---	-----	-----	-----	-----	----	-----	--------------

Reports of fatalities <sup>b</sup>	369	325	117	237	82	95	<b>1,225</b>
------------------------------------	-----	-----	-----	-----	----	----	--------------

# COVID-19-Related OSHA Enforcement Actions

## March 2020 through August 2021

	March- May 2020	June- August 2020	September- November 2020	December 2020-February 2021	March- May 2021 <sup>a</sup>	June- August 2021 <sup>a</sup>	Total <sup>a</sup>	
OSHA enforcement actions								
On-site inspections	114	219		150	210	500	427	1,620
Remote inspections	338	369		139	264	61	19	1,190
Violations cited <sup>c</sup>	225	272		105	210	95	10	917
Penalties (\$ thousands) <sup>c</sup>	1,616	1,740		731	1,634	634	41	6,396

# Reporting Fatalities and Severe Injuries

- All employers are required to notify OSHA when an employee is **killed** on the job or suffers a work-related **hospitalization, amputation, or loss of an eye**.
- A fatality must be reported **within 8 hours**.
- An in-patient hospitalization, amputation, or eye loss must be reported **within 24 hours**.



# How to Report Fatalities and Severe Injuries

- During business hours, call the nearest OSHA office
- Or call the OSHA 24-hour hotline 1-800-321-6742 (OSHA)
- Or report online at [osha.gov/report](https://www.osha.gov/report)



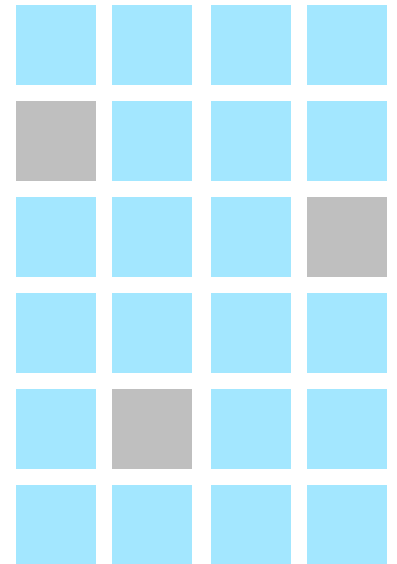
# Regional and Area Office Functions

- Inspections
- Compliance Assistance
- Outreach
- Training
- Penalty Collection
- Abatement Assurance



# Inspection Types

- Unprogrammed inspections
- Programmed inspections





# Unprogrammed Activity

- Imminent Danger
- Fatality/Catastrophe
- Complaints/Referrals



# Programmed Activity

- Special Emphasis Programs
- Site-Specific Targeting

0 110101 10 10 0  
1 100 0100101100 1  
10100 11 0101 0101  
10 1100 1011 0000  
10011 001 0 100 10  
00101011 011011 10  
0 110101 10 10 0  
1 100 0100101100 1  
11 101110101100 0110  
1000 01010100 10001  
011 10110100110 1011  
10100 11 0101 0011

# What happens if company doesn't pay fines?

---

# Criminal Referrals

- Criminal sanctions are outlined in the OSH Act
- To obtain a conviction, a prosecutor must establish certain conditions beyond a reasonable doubt



# Electronically Submitting Injury and Illness Data

- Covered employers must electronically submit data from their OSHA Form 300A to OSHA using OSHA's **Injury Tracking Application**
- Applies to establishments with **250 or more employees** that are currently required to keep OSHA injury and illness records, and establishments with **20-249 employees** that are classified in [certain industries](#) with historically high rates of occupational injuries and illnesses



# Worker Rights

Employees have the right to:

- Report **unsafe conditions and injuries** to management or OSHA
- Assist an **OSHA investigation**
- Request **Training**
- Request **PPE**



# Whistleblower Protections

Employers cannot retaliate against workers who exercise their [rights](#).

## Retaliation includes:

- Reduction in pay or hours
- Being fired, laid off, or suspended
- Reassignment, discipline, or demotion
- Threats, harassment, and intimidation
- Blacklisting from hiring

# Heat Illness Prevention



**WATER. REST. SHADE.**

OSHA's Campaign to Keep Workers Safe in the Heat

- Heat illness **sickens** thousands and results in the **deaths** of dozens of workers each year
- Campaign educates employers and workers on danger of working in heat
- Resources include OSHA-NIOSH heat safety app
- New Guidance & Notice of Proposed Rulemaking  
<https://www.govinfo.gov/content/pkg/FR-2021-10-27/pdf/2021-23250.pdf>



# New Compliance Assistance Resources

## Occupational Safety and Health Administration

[English](#) | [Spanish](#)

[ABOUT OSHA](#) ▾ [WORKERS](#) ▾ [EMPLOYERS](#) ▾ [REGULATIONS](#) ▾ [ENFORCEMENT](#) ▾ [TOPICS](#) ▾ [NEWS & PUBLICATIONS](#) ▾ [DATA](#) ▾ [TRAINING](#) ▾

[Help for Employers](#) / [New Compliance Assistance Products](#)

[Quick Links](#) ▾

## New Compliance Assistance Products

The following are some of OSHA's recently issued or updated compliance assistance products. Many publications with an OSHA publication number can be downloaded or ordered from the [OSHA Publication](#) page. They can also be ordered by telephone from the OSHA Publications Office at (202) 693-1888 or (800) 321-OSHA (6742).

- [Booklets and Guidance Documents](#)
- [Cards](#)
- [Fact Sheets](#)
- [Frequently Asked Questions](#)
- [Posters](#)
- [Safety and Health Information Bulletins](#)
- [Stickers](#)
- [Training Resources](#)
- [Videos](#)
- [Web Pages](#)

 [Quarterly New Resources Reports](#)

 [New Products Archive](#)



Videos: [Controlling Silica Dust in Construction Table 1 Tasks](#)

Video: [Protecting Workers From Silica Hazards in the Workplace](#)

[Sample Silica Training Presentation for Construction](#) (PPTX)

### Safety and Health Programs

 [Silica](#)

[Confined Spaces](#)

[Temporary Workers](#)

[osha.gov/employers](https://osha.gov/employers) (See Quick Links on top right)

# Contact Us

- Toll-free hotline: 1-800-321-OSHA (6742)
- Submit email questions through OSHA's website at [www.osha.gov](http://www.osha.gov)
- Contact your local OSHA Area Office



[www.osha.gov](http://www.osha.gov)

800-321-OSHA (6742)